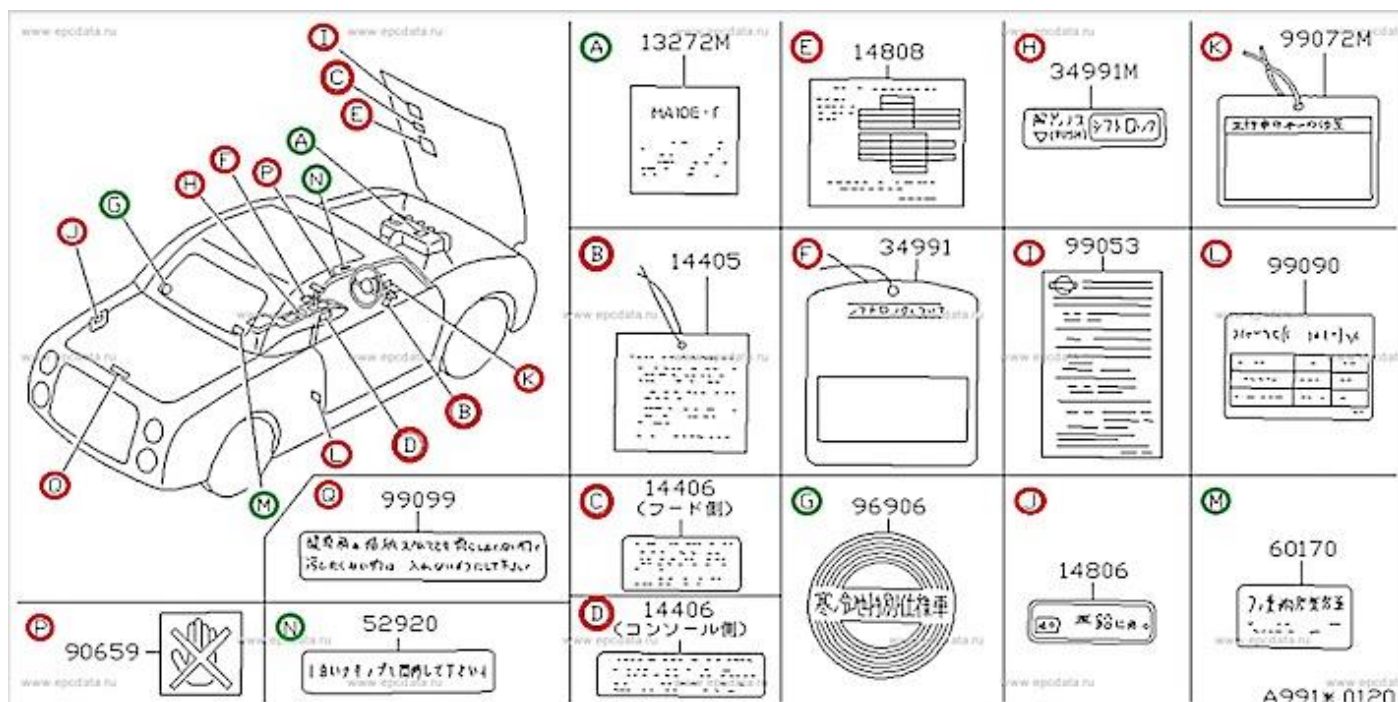


# Nissan Figaro

**Includes new car delivery tags, operating instructions, and warning labels.**

A special thanks to Alan Sykes for helping with this project



**FIGARO**

---

**Owners Club**

COPYRIGHT PROTECTED 2022

## Diagram Identifier – A

Description – Nissan Figaro Engine Specification Plaque

Original Part Number – 13272M

Current part Number – 13290-17B01 – From Figaro Shop

This item has already been remanufactured by the Figaro Shop.

Location

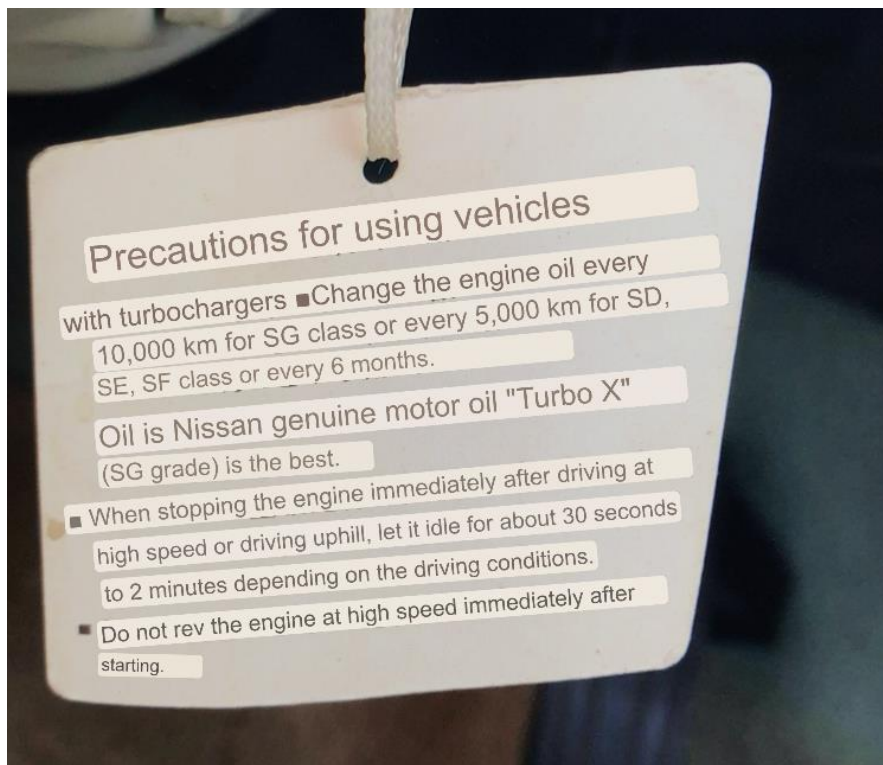


Label



## Diagram Identifier – B

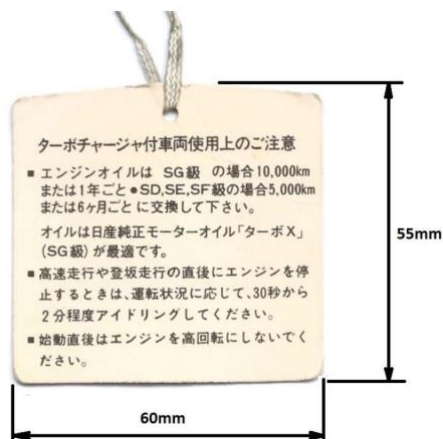
Description –	Delivery Tag, Caution Turbo
Original Part Number –	14405
Current part Number –	14405-62V00 - No Longer Available
Size –	60mm Wide x 55mm High
Translation	



### Location



### Label





## Diagram Identifier – C

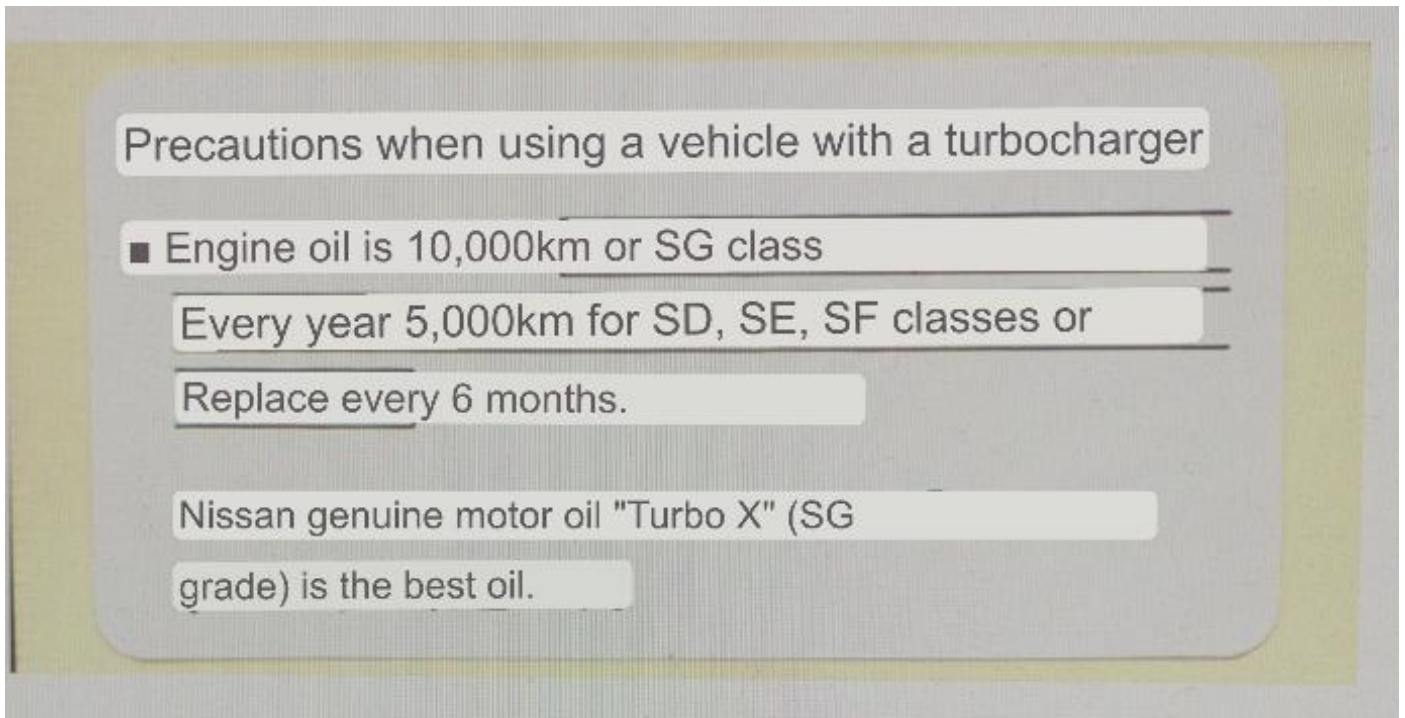
Description – Label, Turbo Oil.

Original Part Number – 14406

Current part Number – 14406-62V00 - No Longer Available

Size – 70mm Wide x 35mm High

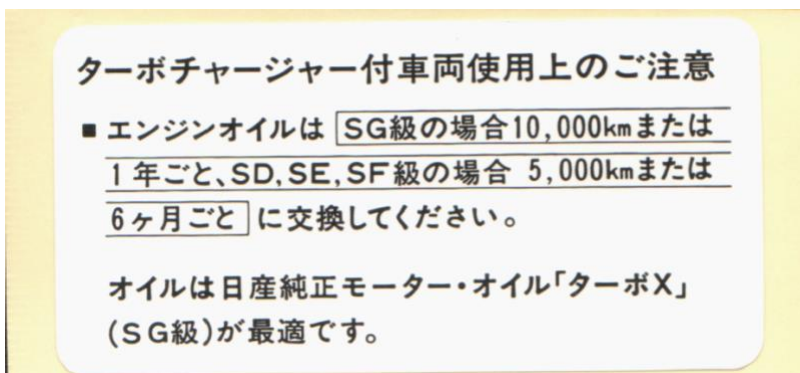
Translation -



Location

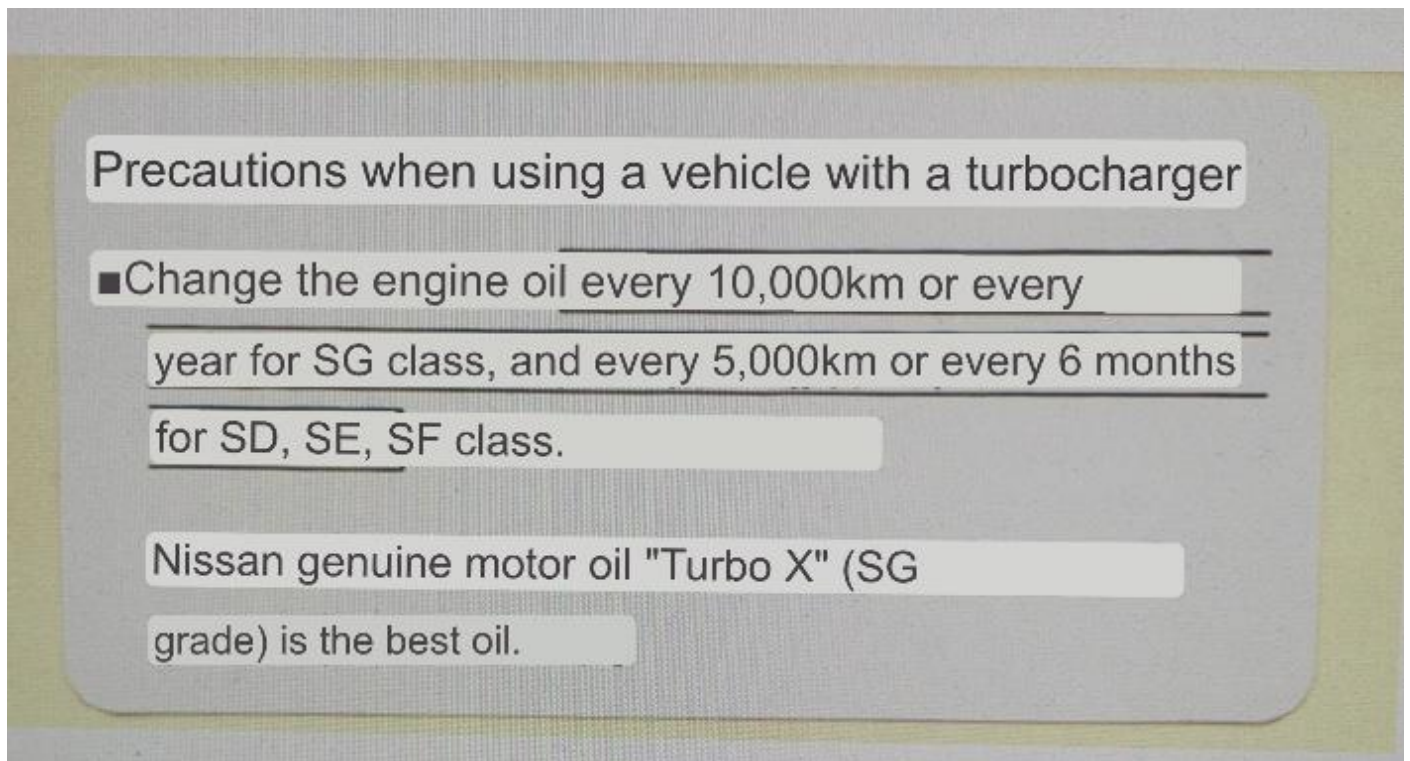


Label

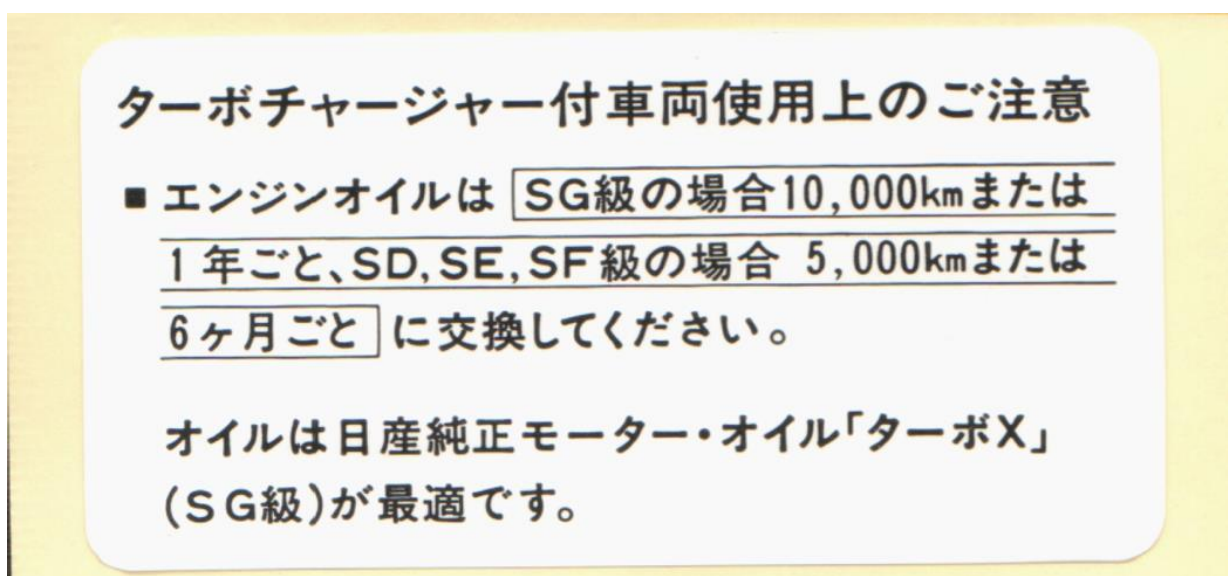


## Diagram Identifier – D

Description –	Label, Turbo
Original Part Number –	14406
Current part Number –	14406-62V10 - No Longer Available
Size –	65mm Wide x 30mm High (to be confirmed)
Location On Car –	On the driver's side of the gearbox lever centre console
Translation –	



Label



# Diagram Identifier – E

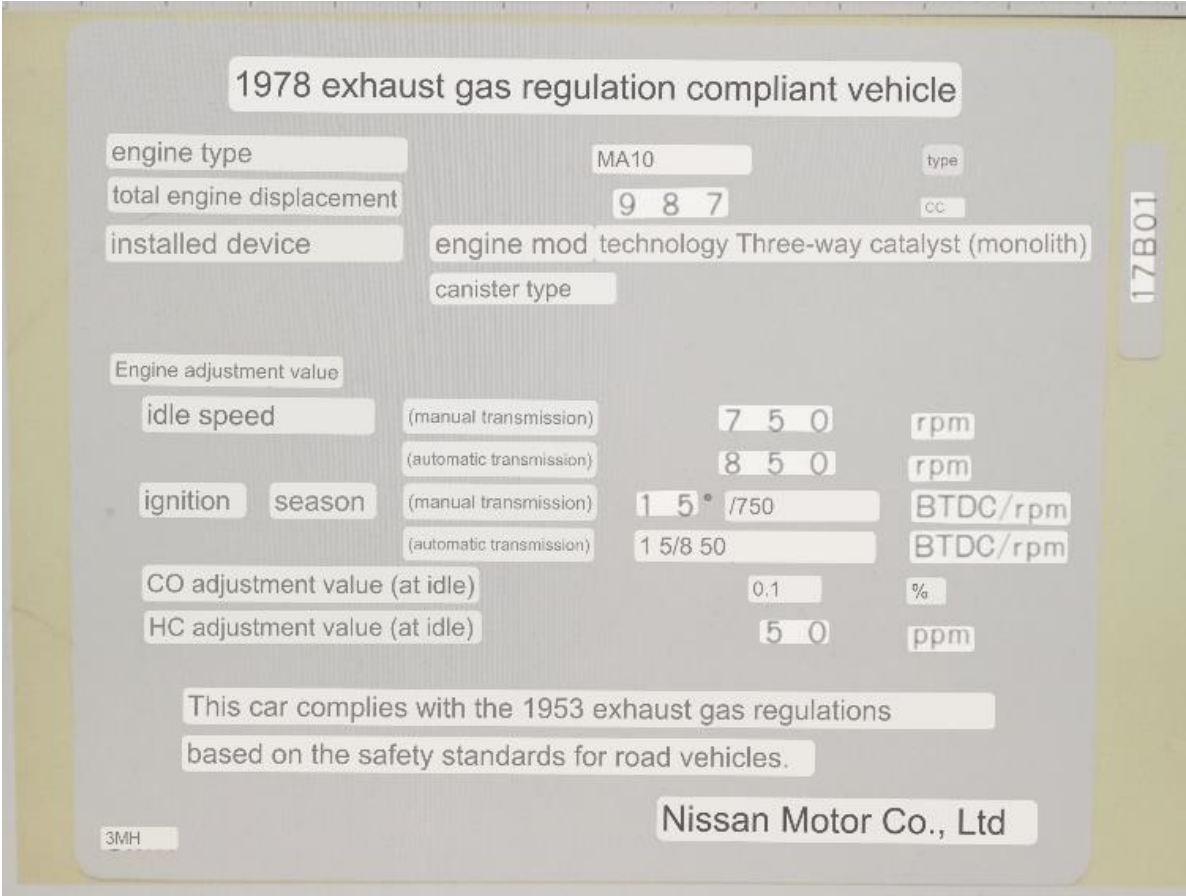
Description – Label, Emission Control A.

Original Part Number – 14808

Current part Number – 14808-17B01 - No Longer Available

Size – 120mm Wide x 100mm High

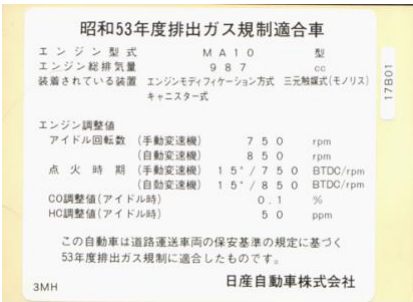
Translation -



Location



Label





## Diagram Identifier – F

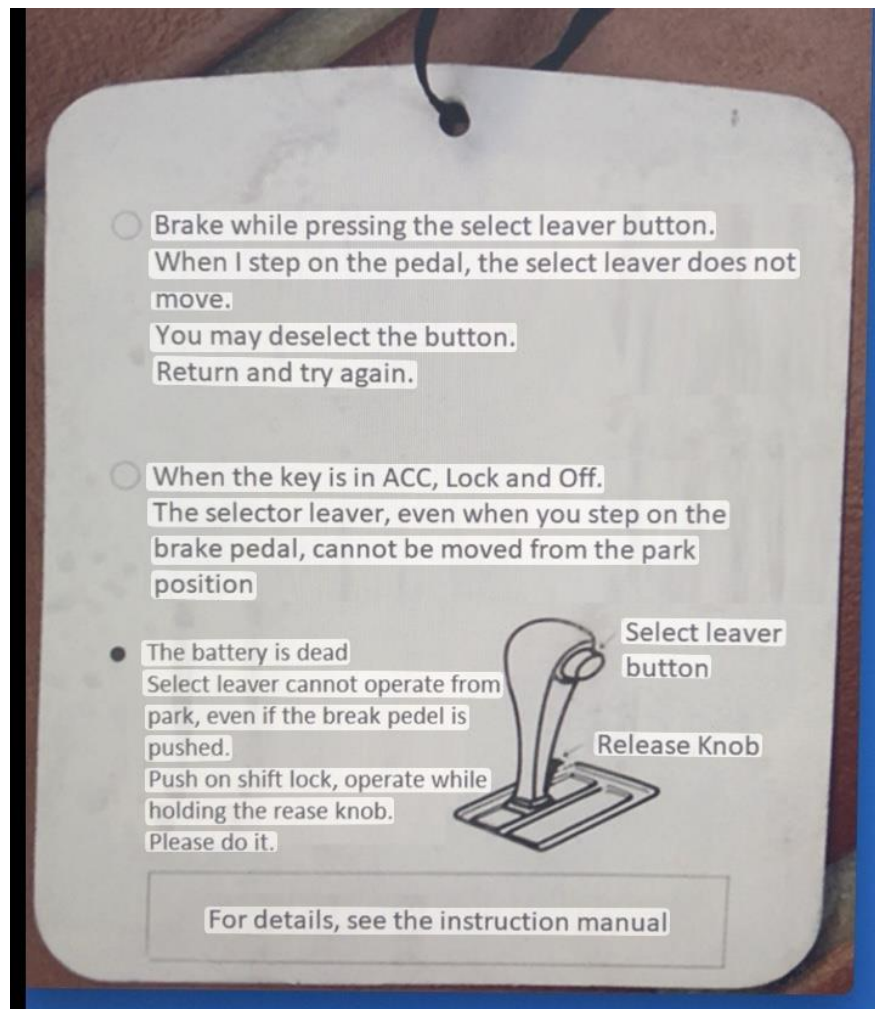
Description – Delivery Label, Caution, Automatic Transmission Control

Original Part Number – 34991

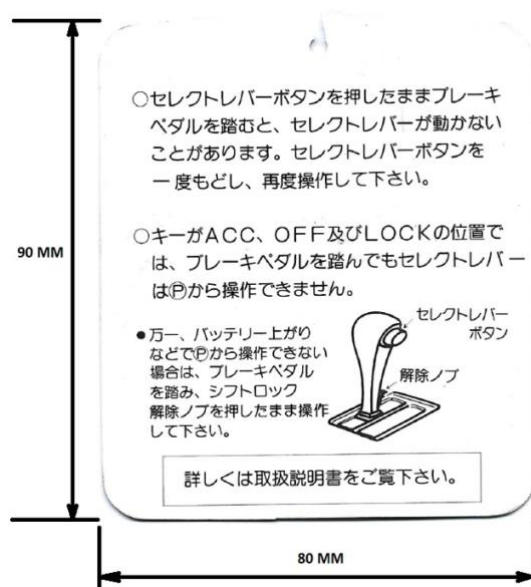
Current part Number – 34991-91L00 - No Longer Available

Size – 80mm Wide x 90mm High

Translation



label



## Diagram Identifier – G

Description –	Label, Frigid Zone
Original Part Number –	96906
Current part Number –	96906-89900
Size –	50mm Diameter
Location On Car –	Rear Screen (Inside bottom LHS)
Translation	



Label





## Diagram Identifier – H

Description – Caution Automatic Transmission Sticker

Original Part Number – 34991M

Current part Number – 34990-91L00 – See Notes

Size – 40mm x 10mm

Translation



Location



# Diagram Identifier – I

Description – Label, Oil Caution

Original Part Number – 99053

Current part Number – 99053-79982 – No Longer Available

Size – 70mm Wide x 95mm High

Translation and label

Use genuine Nissan products for your car! Handle oil and fluid as follows!

Engine oil (genuine Nissan motor oil SD, SE, SF, SG grade)

- Exchange every 10,000km or 12 months driving (SG class)
- Every 5,000km or 6 months (SD, SE, SF class)

● Inspection replenishment: Appropriately before use

manual transaxle oil (genuine Nissan gear oil MP)

- Replacement Private use; No replacement Business use, etc.: 100,000km or every 2 years

Inspection and replenishment Every 12 months for private use, every month for business use, etc.

Automatic transaxle fluid (genuine Nissanmatic fluid C)

No replacement

Inspection and replenishment Every 12 months for private use, every month for business use, etc.

Power steering fluid (genuine Nissan power steering fluid)

- No exchange
- Inspection replenishment: Every 12 months for private use, every month for commercial use, etc. Brake fluid (genuine Nissan brake fluid NR3)

Exchange Private use 3 years for the first time Every 2 years after the 2nd use Business use, etc. 1 year Cargo 1 year

● Inspection replenishment: Appropriately before use

(Note) Never use anything other than genuine Nissan brake fluid NR3.

\* See maintenance manual for details \*

99053 79982

車にはニッサン純正品をお使い下さい!  
オイルおよびフルードの取扱いはつぎのように!

エンジンオイル (純正ニッサンモーターオイル SD, SE, SF, SG 級)

- 交換 10,000km 又は 12ヶ月走行毎 (SG 級)
- 5,000km 又は 6ヶ月走行毎 (SD, SE, SF 級)

● 点検補充 使用前適宜

マニュアルトランスアクスルオイル (純正ニッサンギヤオイル MP)

- 交換 自家用; 無交換
- 事業用等; 100,000km 又は 2年毎

● 点検補充 自家用 12ヶ月毎、事業用等 1ヶ月毎

オートマチックトランスアクスルフルード (純正ニッサンマチックフルード C)

- 無交換
- 点検補充 自家用 12ヶ月毎、事業用等 1ヶ月毎

パワーステアリングフルード (純正ニッサンパワーステアリングフルード)

- 無交換
- 点検補充 自家用 12ヶ月毎、事業用等 1ヶ月毎

ブレーキフルード (純正ニッサンブレーキフルード NR3)

- 交換 自家用 初回 3年 2回目以降 2年毎
- 事業用等 1年毎 貨物 1年毎

● 点検補充 使用前適宜

(注) 純正ニッサンブレーキフルード NR3 以外は絶対に使用しないで下さい。

\* 詳細は整備手帳を参照して下さい \*

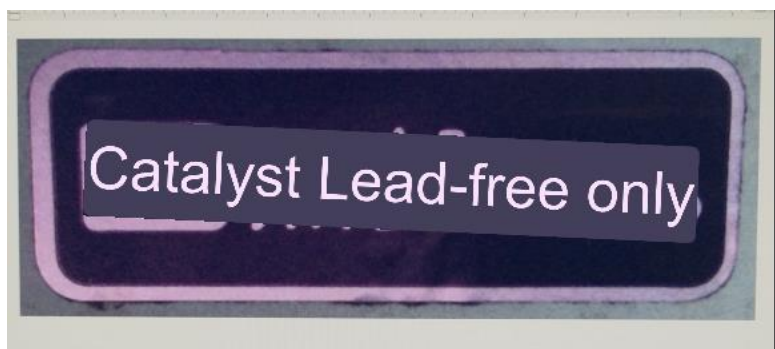
99053 79982

## Location



## Diagram Identifier – J

Description –	Label, Fuel Economy; Label, Unleaded Fuel Only; Sticker, Fuel
Original Part Number –	14806
Current part Number –	14806-89901 - No Longer Available
Size –	45mm Wide x 15mm High
Location On Car –	Inside the fuel filler cover flap on the rear LHS wing
Translation	



Label



Location

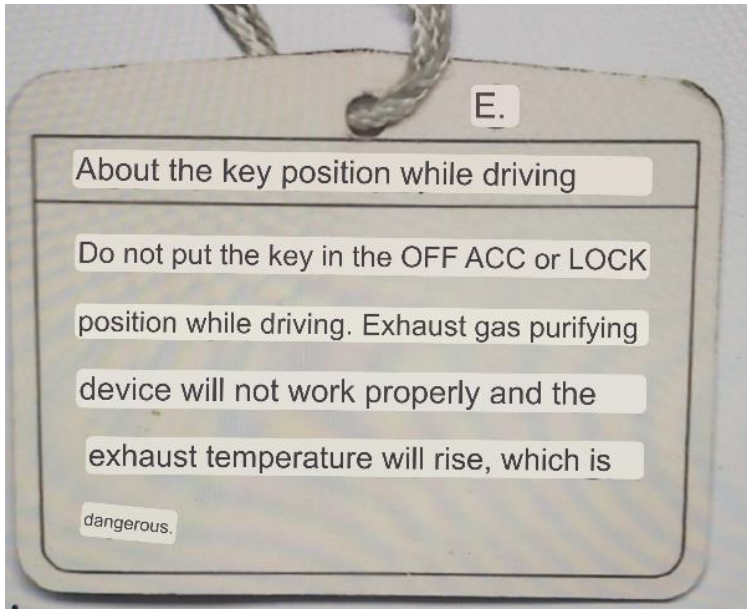




## Diagram Identifier - K

Description – Delivery Tag, Key Caution  
Original Part Number – 99072M  
Current part Number – 68215-89905 - No Longer Available  
Size – 50mm Wide x 40mm High

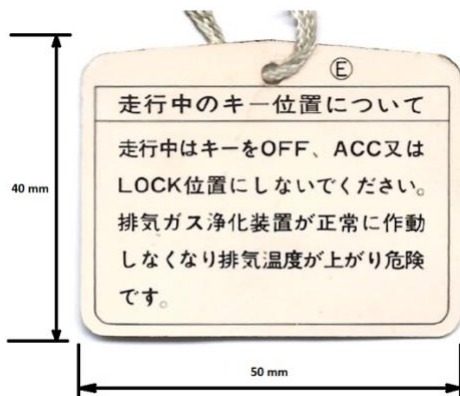
### Translation



### Location



### Label



# Diagram Identifier – L

Description – Tyre Pressures.  
Original Part Number – 99090  
Current part Number – 99090-37B00 - No Longer Available  
Size – 50mm x 30mm  
Translation

Tyre Pressure ( ( ) At High Speed ) PSI		
Tire Size	Front Wheel	Rear Wheel
155SR12	32(32)	32(32)
165/70R12 77H	29(29)	29(29)
37B00		

Location



Label

タイヤ空気圧 ( ( ) 高速時 ) kg/cm²		
タイヤサイズ	前輪	後輪
155SR12	2.2(2.2)	2.2(2.2)
165/70R12 77H	2.0(2.0)	2.0(2.0)
37B00		

## Diagram Identifier – M

Description –	Label, Caution Paint.
Original Part Number –	60170
Current part Number –	60170-89901 - No Longer Available
Size –	70mm Wide x 45mm High
Location On Car –	Rear Screen (Inside bottom RHS)
Translation	



### Location

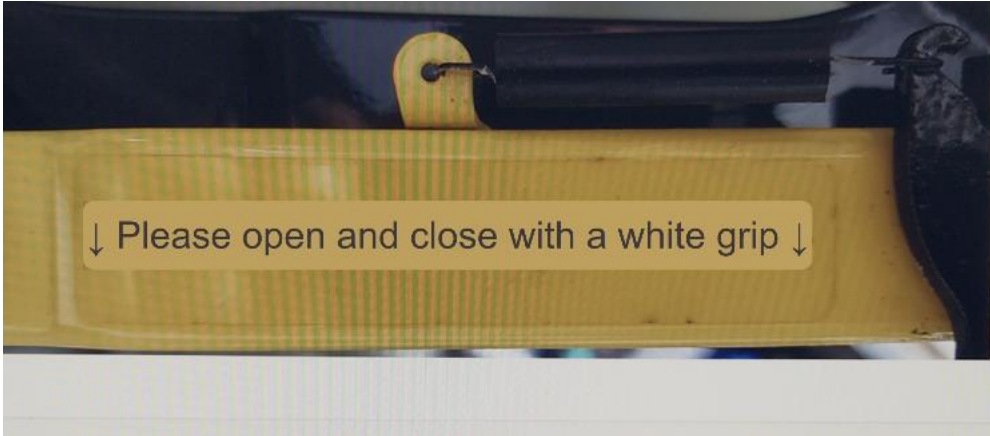




## Diagram Identifier – N

Description –	Label, Caution
Original Part Number –	52920
Current part Number –	97194-36B60 - No Longer Available
Size –	140mm Wide x 16mm High

Translation



Location

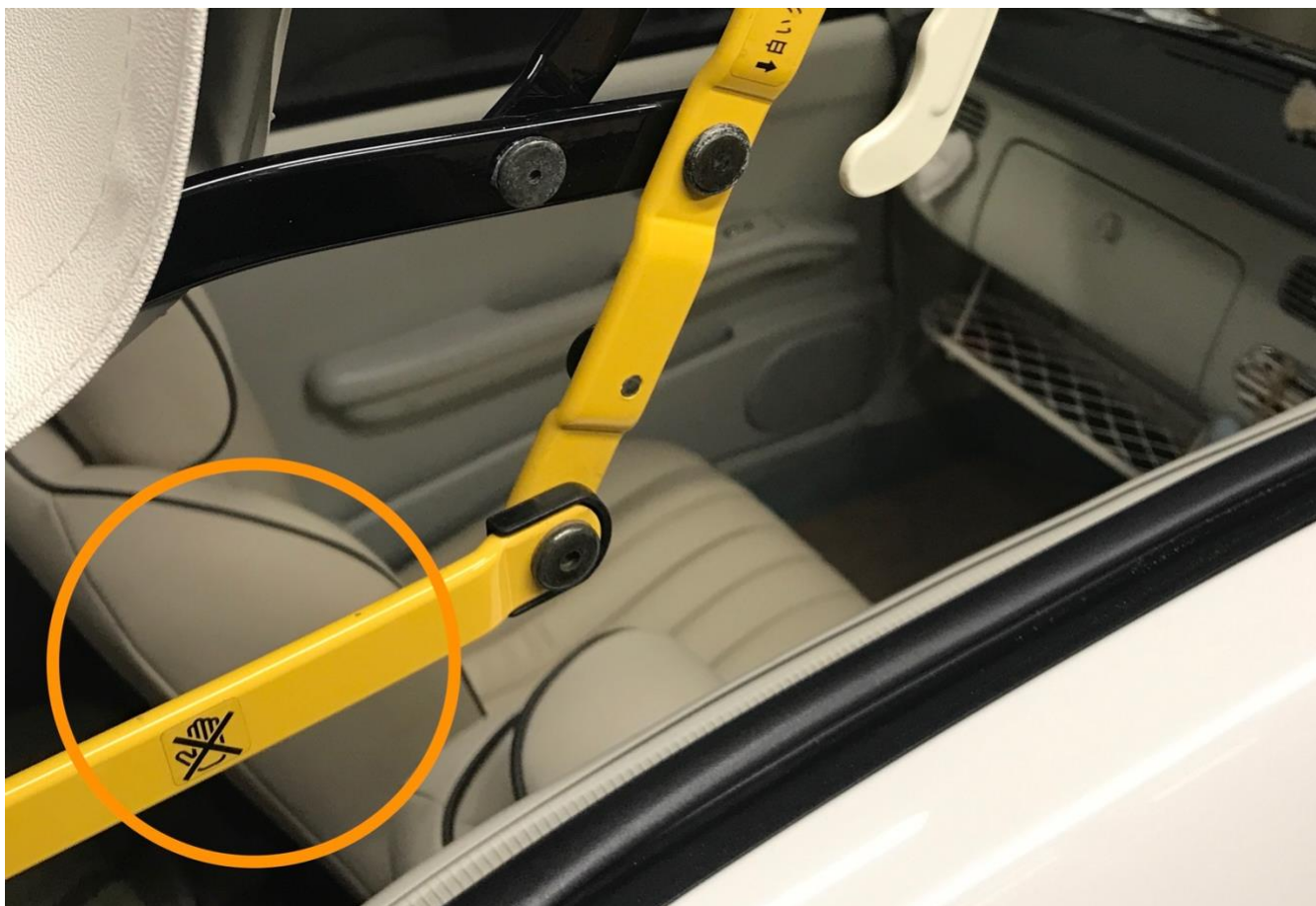


Label



## Diagram Identifier – P

Description –	Label, Caution hand signal
Original Part Number –	90659
Current part Number –	97195-37B60 - No Longer Available
Size –	16mm Wide x 16mm High
Location	

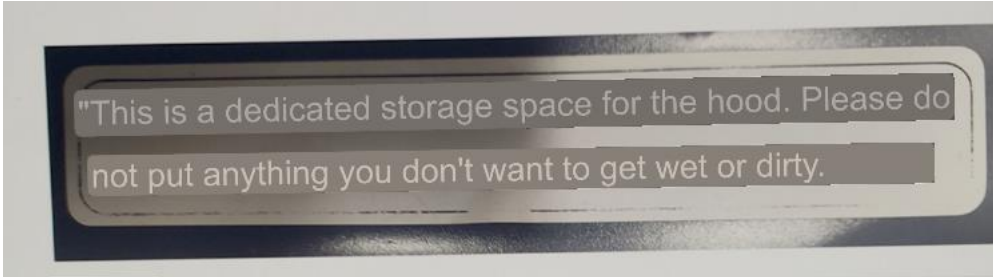


Label



## Diagram Identifier – Q

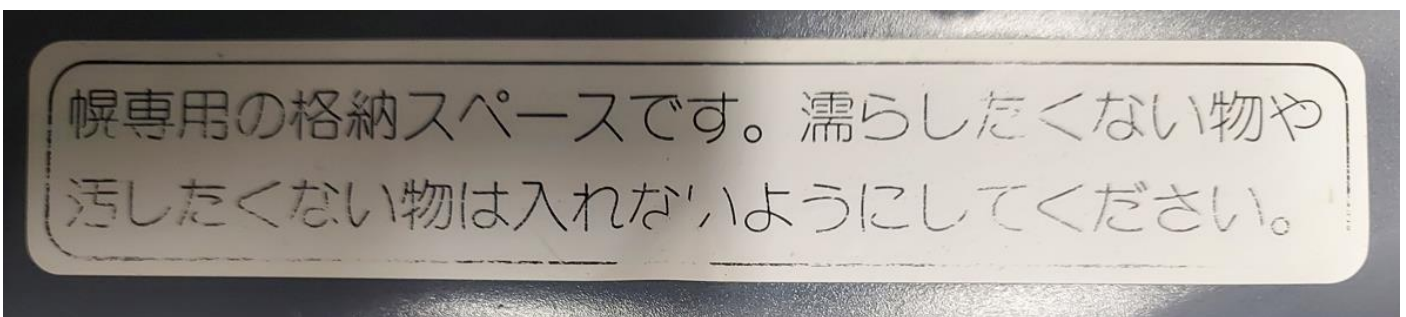
Description –	Label, Caution
Original Part Number –	99099
Current part Number –	97194-37B60 – No Longer Available
Size –	140mm Wide x 25mm High
Translation	



### Location



### Label





## Diagram Identifier – R (Not on the diagram)

Description – Parking Permit (on some cars but not all)  
Size – 75mm Diameter  
Location On car – Rear Screen inside at the bottom LHS to the right of label “G”  
Translation

**White text on blue background – “Storage Location Marker”**

**Black text on off white background – “Kawasaki City, Kanagawa Prefecture”  
“Miyamae Police Station Chief”**



## Diagram Identifier - S (Not on the diagram)

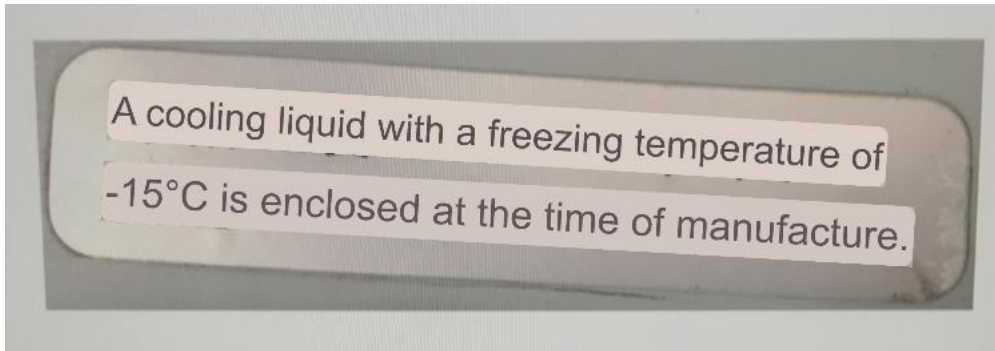
Description –	Inspection Sticker
Size –	75mm Diameter
Location On car –	Front Screen inside at the bottom LHS



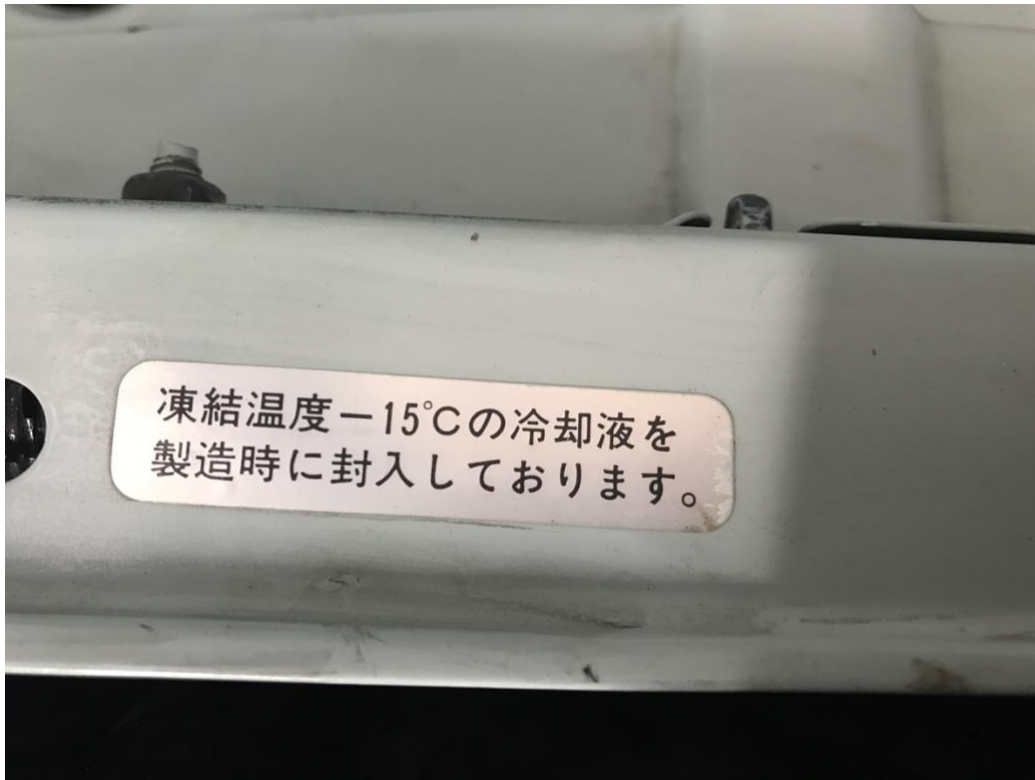
## Diagram Identifier - T (Not on the diagram)

Description – Label next to radiator filler cap

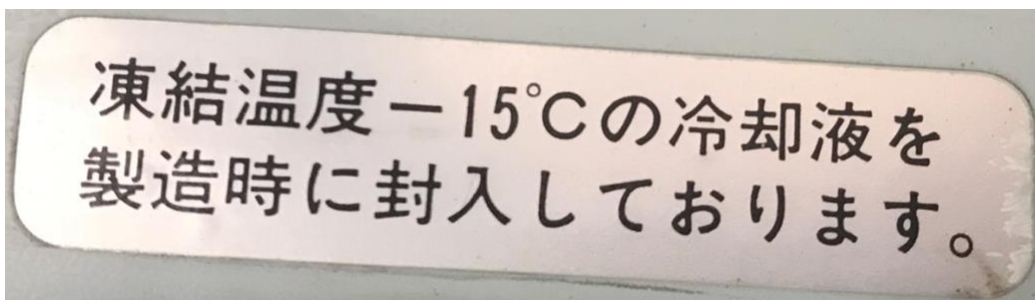
Translation



Location



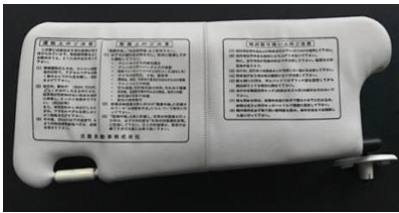
Label



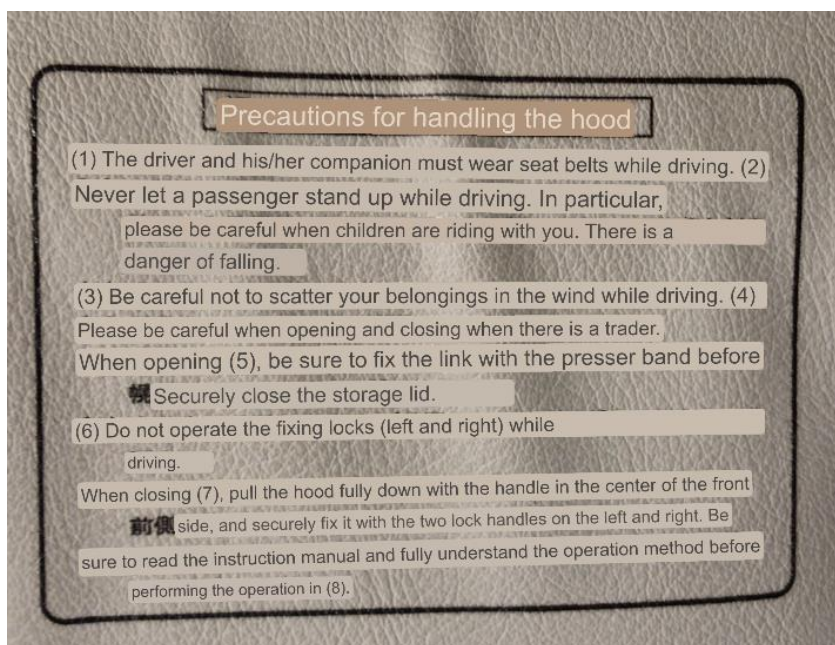
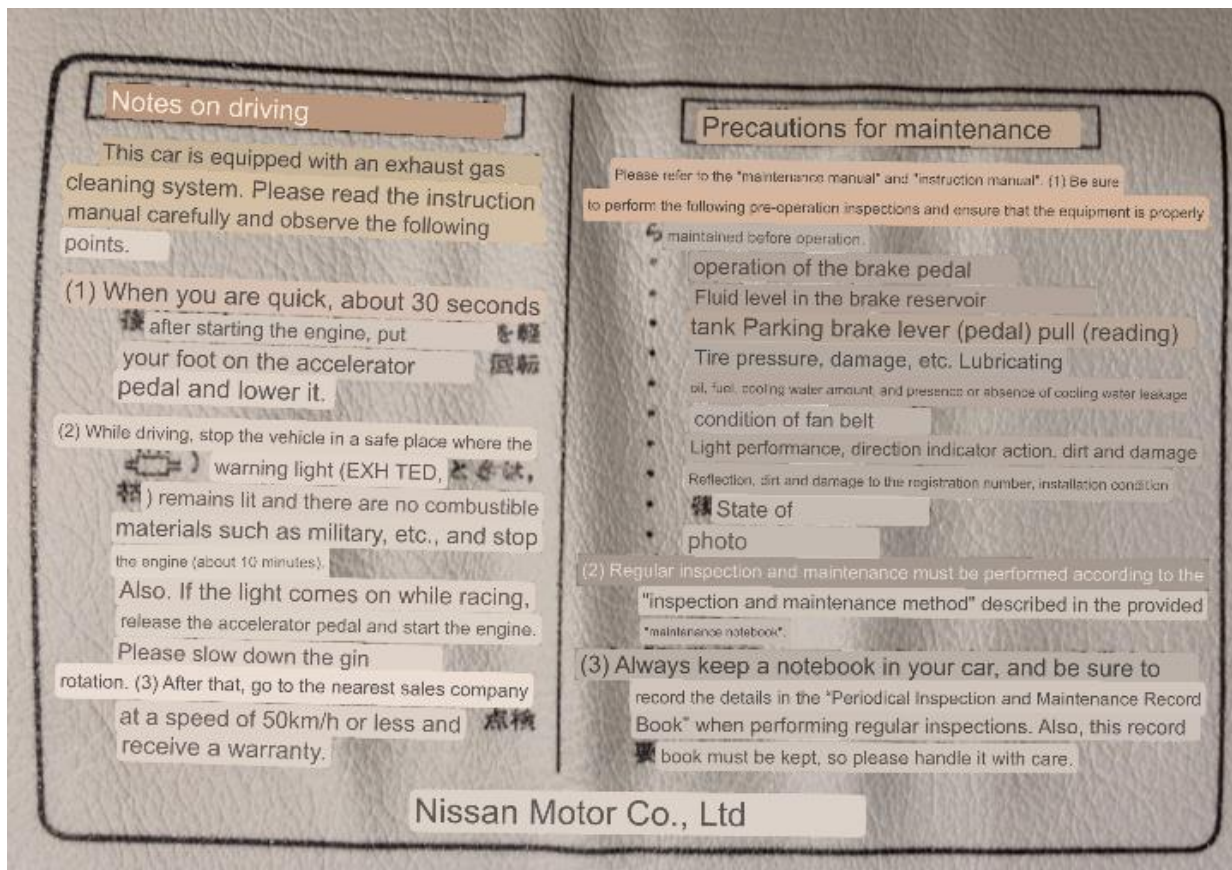


# Diagram Identifier - W (Not on the diagram)

Description – Text on Sun Visor



Translation



## Diagram Identifier - X (Not on the diagram)

Description – Label on top of radiator filling cap

Translation

