

Let's get it out in the open...You get what you pay for. That's it I've said it. Especially when technology is concerned. This balance between price and technological evolution can be quite vast, but with the right guidance need not quite break the bank.

We are all familiar with ebay, Amazon, and the ever increasing number of online shopping portals, that have sprung up over the last few years. Some reliable products can be available on these platforms, but if installed incorrectly will defeat their purpose. Some of the packages on this list due to their complex fitting and commissioning procedures will need to be installed by industry professionals or their validity (such as Thatcham approved products) will be in question. With this said let's begin...

### **Priorities..**

These will be different for every owner, it's important before you start upgrading the security or convenience features on your Figaro you take some time to determine how far you want to go with these upgrades. Did you just want an immobiliser? An alarm with immobiliser? A Tracker? Remote Start? Remote boot release? All of the above? It goes without saying if you plan for the things you may want in the future you will have a better cleaner, more structured install. Often when we come to work on Figaro's we come across cabling from prior installs on top of new laid cable, on top of even older abandoned installs. Where possible, cabling should be kept to a minimum. It becomes easier to trace a problem in the future if redundant cabling is removed.

### **Is it worth Having an Alarm?**

Unfortunately theft of Figaro's and their parts have been on the increase for many years now. With a lot of our clients only coming to us after their vehicle has been targeted. With the emergence of new "scan and grab" technology it has left some vehicles with pre-existing alarm systems open to vulnerability. With a few well chosen packages we can turn that trend, and give you the confidence to leave your pride and joy where you choose, knowing that in the event of any alert, you will be notified.

## Complete Security Guide

### The Options

**The Immobilisier.** With aesthetics being high on any owners list... If you don't want or already have an alarm (of questionable pedigree) this insurance approved unit is a great upgrade. With no drilling needed the unit can be mounted discreetly and with its operation being completely Handsfree it's usage could not be easier.

£349 Supplied & Fitted  
(please call for club  
discount)



The **Meta M43** is a Passive Arming, Two Circuit (RFID) Immobiliser, Supplied with Two Driver Recognition Cards as well as an Emergency Override Touch Key, Disarms when the Driver Card is Within Two Meters, and arms automatically once the ignition is turned off with the tag out of range!  
With this in mind consider the M43 will only protect your vehicle from being driven away, it will not offer any protection from theft or vandalism.

### The Entry Level Alarm

This is a difficult choice, as I said earlier on this is where what you spend is reflected on the technology inside. Most alarm systems fall into declensions. Within those categories the features available tend to be the same. Different installers may prefer different brands but within those pricing tiers the features tend to be fairly similar. On Figaro's all inputs are analogue so every connection needs to be hardwired to vehicle, so an alarm that has plenty of inputs & outputs is preferred so the option to control accessory and convenience features is present, if required.

£449 Supplied & Fitted  
(please call for club  
discount)

### Clifford Concept 650 MkIII



This is the most capable of the older G5 range of alarms available from Clifford. Most of you will have heard of or even have had a Clifford as some point in time. On The Figaro the Concept 650 will give you The signature “multi tone siren” with Battery Back up. Two point immobilisation, the ability to connect to central locking actuators, door, and bonnet sensing, two Gloss Black Key fobs, and a Dual zone microwave proximity sensor this can be particularly valuable if you wished to secure the vehicle with the roof open. Remote boot release is a popular ‘Add on’ to the standard package. Remote start can be achieved but an additional alarm module needs to be purchased in order for activation. On the plus side you can add on a Turbo timer feature with the edition of a relay or two!

### A Revolution in Security...

Pandora is relative newcomer into Uk security scene, having been around for nearly 3 years now. This can be taken as a very positive attribute. Unfortunately when it comes down to alarms the UK has been let down by the manufactures. Up Until recently we have only had the same alarm models for the last Ten years!

What does this actually mean to the Figaro owner? I hear some of you saying “that’s a good thing right? If it’s still here after 10 years it’s a solid product?” I’m afraid to say it, but no. Technology changes, and quickly, mostly for the better. Think of your mobile phone, I bet you no one reading this now is using the same phone they had ten years ago but they may have the same Alarm! Phones have got better, smarter. Alarms have got better, and smarter, much smarter. That evolution has not occurred across the board, it’s been sculpted by Pandora who have helped to develop a product Range with the UK in mind.



## Complete Security Guide

It's not been overnight, it's been refined over the last two years leading to the current range that simply ticks all the boxes. Which is probably why you may not have come across it. Writing this as an independent specialist we are able to give unbiased advice as to what product suits an install best based on personal requirements and real world experience. Moving on to our second Alarm recommendation...

**£749 Supplied & Fitted**  
(please call for club discount)



### Pandora Light Pro V2

This is a Thatcham Cat 1, Alarm Immobiliser with battery back up that incorporates a Long range 1 mile radius OLED Pager using new Lora technology that allows secure encrypted communication with the main alarm unit. This long range Pager can be really beneficial as we have found that often our clients Figaro's may not be parked on a driveway but tucked away in a garage, or on a side road not within earshot! If the alarm is triggered an alert is sent in real time to the Pager unit therefore notifying the owner of any eventuality. The Pager unit which is also rechargeable allows you to adjust many of the Alarm and sensor settings directly from its screen.

One of the great things about the Light Pro is the amount of sensors that are included. Tilt, Dual Zone impact, Motion, and Dual Zone Proximity Sensor. These are particularly beneficial for the Figaro as it covers the vehicles vulnerable spots, such as the roof, and wheels, and even detects forward or backward motion of the whole vehicle.

The Light Pro has a Driver recognition system! Using Pandora's unique 128 bit Encryption code the alarms driver tag is able to establish if the vehicles access is authorized or not. If the tag is not detected the key fob will not unlock the doors and In turn will not disarm the alarm system. Any attempt to force entry will result in an alarm activation which will notify the user via the pager of an alarm event.

An additional accessory feature that is well received, that adds a little modern charm and convenience to the Figaro's basic spec is the "Handsfree Option". This again revolves around the encrypted driver tag. When it is detected near the vehicle (the range can be expanded or contracted) the system will automatically disarm and unlock the vehicle. When the vehicle is switched off and exited, the tag will automatically trigger the system to Arm and lock the doors. We have been told this feature is an absolute lifesaver for those of us out there that are bit forgetful or have our hands full when leaving the vehicle.



As with all alarms, the ignition, door, boot, & bonnet sensing options are available as standard but the Pandora Systems offer an exciting twist...

Where no pin switches are available the general procedure is to drill contact switches into the bodywork, which let's face it, is less than desirable. Remember when I said alarms have changed?

## Complete Security Guide

Enter the wireless multipurpose DMS Sensor... It detects both motion and impact. What does this mean in the real world? For a start no more drilling. The sensor can be bonded to the underside of the boot lid and will operate in the same way as a mechanical switch. Great, I hear you say, but let's think outside the box. We've used this sensor on a client's Figaro's to secure their luggage Rack/ Picnic Hamper. Because it's wireless we were able to mount it inside the hamper, any attempt to remove it resulted in the alarm being triggered and notifications being sent to the owner.

This sensor can also be used on garage doors thereby adding an additional layer to your Figaro's security (if you have a garage). Any attempt to open the garage door once the alarm system is armed would then result in an alarm notification before the perpetrator even sees the vehicle!

Two point immobilisation arrives as standard with the Light Pro but we are able to expand those options with wireless blocking modules. These allow additional circuits to be blocked from operation should the driver tag not be present. (These have many useful applications but best discussed with your installer).



Remember we spoke about how Smartphones have moved on??? Bluetooth...It's used in and for everything and yes you've guessed it you can control your Alarm from your phone via a smart secure Bluetooth application. Pandora's Bluetooth Protocol is encrypted (like everything else in their portfolio). This allows us to effectively use your Phone as a Remote Control for your alarm system. In addition it enables the user to swiftly and securely adjust sensor and convenience settings from the palm of your hand! The app visualises many aspects of your vehicle digitally, such as doors open, ignition on, vehicle running, engine bay temperature, internal cabin temperature, as well as runtime on Remote Start...

An Important note, with the Figaro's battery capacity being somewhat reserved, very low current draw Alarms can be the key to maintain adequate battery levels over long periods of time. Unlike other Alarm systems all sensors (except the proximity) are housed within Pandora's main ecu minimising the need for separate power modules for each component. Less modules equal Less power consumption, which in turn leads to longer battery life.

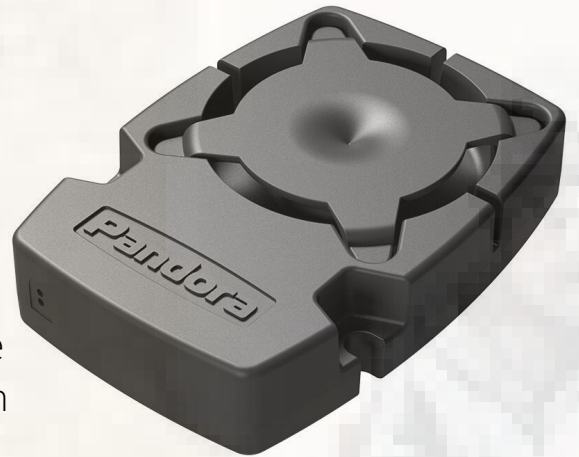
Let's take care of this officially.

Autodynamics Ltd are Insurance Approved Alarm installers and Thatcham TRI (Until the scheme was disbanded in 2019). Remote Start is legal and is approved under the current Range of Thatcham alarm systems. Pandora can securely execute remote Start and has some great features such as battery or temperature controlled remote start that really can benefit some Figaro owners..





Often Figaro's can be second or weekend cars for many owners and as a result they are not driven regularly, this is where remote start can be beneficial. Scheduled starts can be executed if the battery voltage drops below a predetermined value. This will allow the vehicle to run securely (whilst the alarm is still armed) to charge up the battery in-situ. Once the level of charge is reached the system will automatically shut the engine down, whilst remaining in an armed state. Any attempt to gain un-authorised access to the vehicle whilst in remote start mode will result in immediate engine shut down and an instant Alarm notification via the oled pager, siren or Bluetooth app.



Alarm Tracking, & GSM , GPRS Upgrade...

Need more from your Alarm system?

No problem. With our Pandora EYE Pro upgrade package, integrated tracking, GSM alert notifications (where the unit calls your phone to notify you of an alarm event), as well a Push Notifications in real-time are all included via the Pandora Pro/ online app.

Tracking is available in real-time and post data, with the integrated Telematics Desktop portal giving Full access to all vehicle event history, geofencing, and vehicle control dashboard.



### Insurance Approved Figaro Tracking

#### S5 VTS & S7 Trackers

Like everything else that uses a SIM card the basic Tracker has evolved. Why would you want or need one? According to the latest statistics 69,547 vehicles were stolen in the UK last year, fitting a Tracker can prevent you from being a statistic.



S7 Trackers offer protection against theft with unauthorised vehicle movement, battery disconnection alerts, and 24 hour monitoring. They will not protect you against ignition hot-wiring, but are often what the insurance companies require. Our pick of the Bunch are the **Smartrack Protector Pro Global**, or **Meta Trak S7**. S7 & S5 VTS Trackers come with a smartphone app that enable the user to monitor the vehicles status and journey in real time. The Meta App features 30 day event history and crash alert notification that can be beneficial in the event of an insurance claim.

**S7 £349 Supplied &  
Fitted (please call for  
club discount)**



S5 VTS Trackers offer GLONASS, GPS, and GSM technology enabling extra covert installation which can be extremely useful in the Figaro as there are not many places that these devices can be securely mounted. Driver recognition tags are used to protect unauthorised ignition cycling or movement.



Owners Club

## Complete Security Guide

Meta Trak's **S5 VTS Deadlock** is an industry leader and goes a step further by incorporating a fully functional wireless immobilisation system into the tracking. Using Driver ID Tags (displayed in the picture).

The immobilisation can be activated by the user via their smartphone application as well as the control center. This can be extremely useful in the unfortunate event where the vehicle has been stolen with the keys, allowing the engine to be blocked remotely! If you were thinking of having an immobiliser fitted and liked the idea of being able to track the vehicle too, this is a great option.



S5 Vts £699 Supplied & Fitted (please call for club discount)

### **Not Happy with Tracking on its own?**

It is also possible to integrate the trackers listed into the two alarm systems we've recently covered, thereby creating an all encompassing Security Package. If paired with the Figaro's alarm system the tracker would notify the user of any alarm trigger via push notification or call center alert.

**AUTODYNAMICS**  
LTD

Tel: 0207 770 6464  
Web: [www.autodynamicsltd.co.uk](http://www.autodynamicsltd.co.uk)  
Email: [info@autodynamicsltd.co.uk](mailto:info@autodynamicsltd.co.uk)